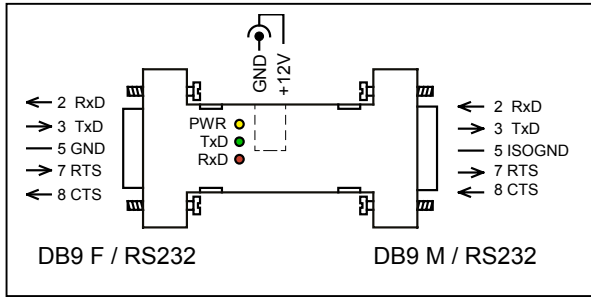
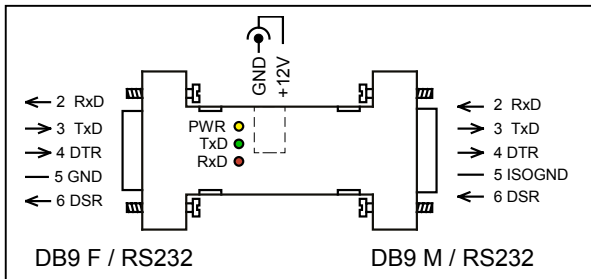


CONNECTOR AND PIN LAYOUT - STANDARD



CONNECTOR AND PIN LAYOUT – OPTION *



COMERGON

MINI serie

MINI 4.1/232i

RS232 isolator

supports RxD, TxD, RTS, CTS

TECHNICAL PARAMETERS

max. transfer rate	115 kb/s
max. recommended line length	15 m
supported signals	RxD, TxD, RTS, CTS
supported signals – option *	(- - - , DSR, DTR)
optical indication	RxD, TxD, PWR
connector RS232c – PC side	D-SUB 9 pin F
connector RS232c – DEVICE	D-SUB 9 pin M
connector power supply	1.3mm plug
optical isolation - optocoupler	2.5 kV
galvanical isolation – DC/DC	1 kV
overvoltage protection (soft) - mains	600W/1ms
power supply	+12V DC ±10%
power consumption	max 1W
dimension	63 x 17 x 34 mm
<i>* necessary specify in order</i>	

COMERGON Ltd.

tel.: +421-2- 4488 9090
tel./ fax.: +421-2- 4487 3525

Cachticka 23, 831 06 Bratislava
Slovak Republic

e-mail: service@comergon.sk
http: www.comergon.sk

CONDITIONS OF WARRANTY

ComErgon Ltd. provides full warranty of 24 month for serial interface module MINI 4.1/232i starting on the day of purchase. The warranty is except for the cases in which the functioning of the module has been affected by faulty manipulation, natural catastrophes or other external factors.

